



**Brookside, Alderton, GL20 8NU**

**SHELDON  
BOSLEY  
KNIGHT**

LAND AND  
PROPERTY  
PROFESSIONALS



# Property Description

A three-bedroom terraced property situated on the edge of the sought after village of Alderton.

The property briefly comprises: entrance hall with stairs rising to the first floor, WC, living room, dining room with double doors to garden, fitted kitchen with under stairs storage and garden access.

Upstairs there are two double bedrooms, a single third bedroom and family bathroom with bath and shower.

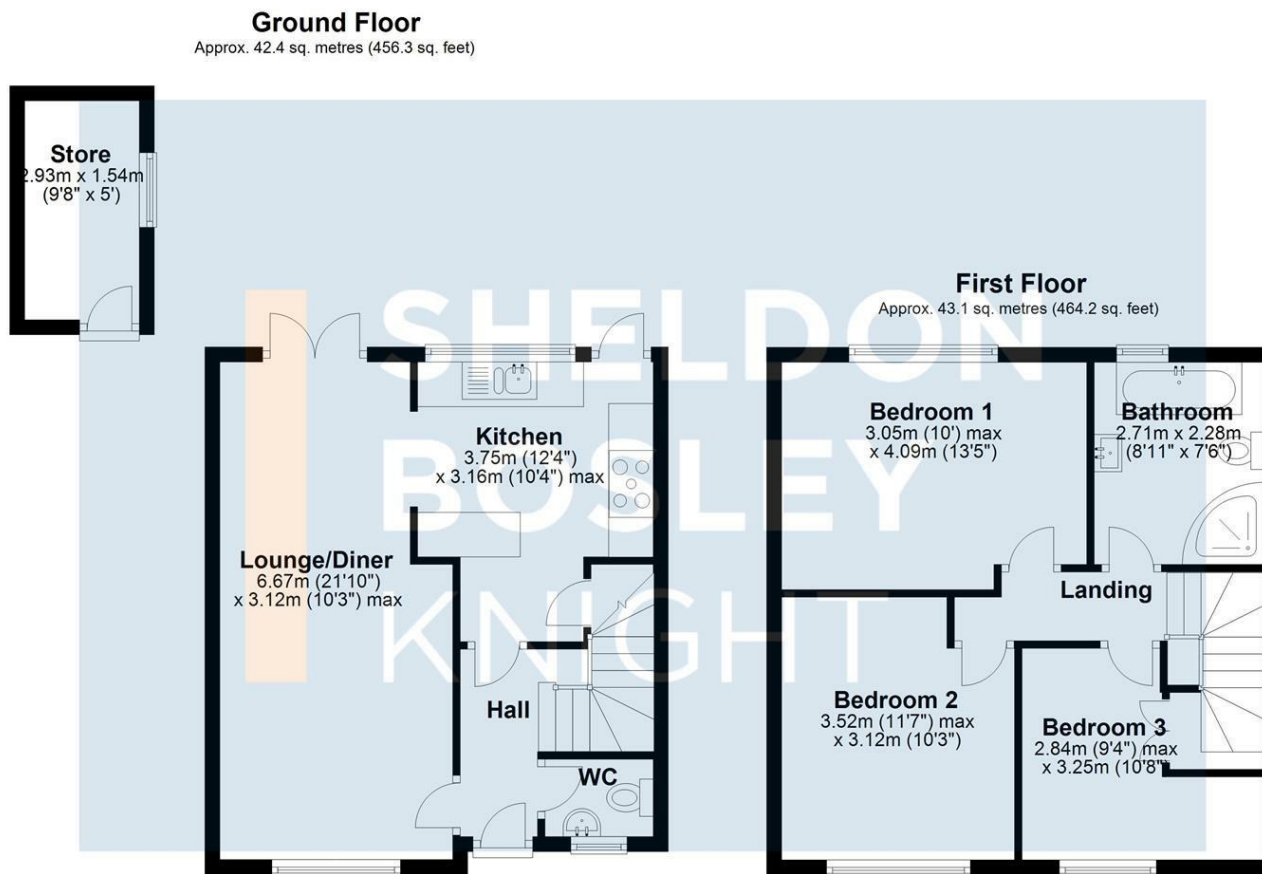
To the rear is a low-maintenance garden with decking area, lawn, workshop, rear views and side access to the front.











Total area: approx. 85.5 sq. metres (920.5 sq. feet)

All efforts have been made to ensure that the measurements on this floorplan are accurate however these are for guidance purposes only.  
Plan produced using PlanUp.

## Key Features

- THREE BEDROOMS
- SOUGHT-AFTER VILLAGE
- LIVING ROOM / DINER
- KITCHEN
- GROUND FLOOR WC
- TWO DOUBLE BEDROOMS & SINGLE THIRD BEDROOM
- BATHROOM
- LOW-MAINTENANCE REAR GARDEN
- WORKSHOP
- EPC = C

**Guide Price**  
**£245,000**

EPC Rating - C

Tenure - Freehold

Council Tax Band - B

Local Authority -  
Tewkesbury Borough Council